

# Test Report

No. : CE/2019/52321

Date : 2019/05/21

Page : 1 of 7

KOTEC CORPORATION  
21-15, 3 CHO, CHAYAMADAI, MINAMI, SAKAI, OSAKA, 590-0115 JAPAN

The following sample(s) was/were submitted and identified by/on behalf of the applicant as :

Sample Submitted By : KOTEC CORPORATION  
Sample Description : POLYCARBONATE RESIN  
Style/Item No. : K-(a)# ALL/COLORS (a):ANY NUMBER 10-50 #:SUFFIX OPTIONAL  
Sample Receiving Date : 2019/05/14  
Testing Period : 2019/05/14 to 2019/05/21

=====  
**Test Requested** : As specified by client, with reference to RoHS 2011/65/EU Annex II and amending Directive (EU) 2015/863 to determine Cadmium, Lead, Mercury, Cr(VI), PBBs, PBDEs, DBP, BBP, DEHP, DIBP contents in the submitted sample(s).  
**Test Method** : Please refer to following pages.  
**Test Result(s)** : Please refer to following pages.  
**Conclusion** : Based on the performed tests on submitted sample(s), the test results of Cadmium, Lead, Mercury, Cr(VI), PBBs, PBDEs, DBP, BBP, DEHP, DIBP comply with the limits as set by RoHS Directive (EU) 2015/863 amending Annex II to Directive 2011/65/EU.

  
Troy Chang / Manager - Tech  
Signed for and behalf of  
SGS TAIWAN LTD.  
Chemical Laboratory - Taipei



# Test Report

No. : CE/2019/52321

Date : 2019/05/21

Page : 2 of 7

KOTEC CORPORATION  
21-15, 3 CHO, CHAYAMADAI, MINAMI, SAKAI, OSAKA, 590-0115 JAPAN

## Test Result(s)

PART NAME No.1 : WHITE PLASTIC PELLETS

Test Item(s)	Unit	Method	MDL	Result	Limit
				No.1	
Cadmium (Cd)	mg/kg	With reference to IEC 62321-5 (2013) and performed by ICP-AES.	2	n.d.	100
Lead (Pb)	mg/kg	With reference to IEC 62321-5 (2013) and performed by ICP-AES.	2	n.d.	1000
Mercury (Hg)	mg/kg	With reference to IEC 62321-4:2013+AMD1:2017 and performed by ICP-AES.	2	n.d.	1000
Hexavalent Chromium Cr(VI)	mg/kg	With reference to IEC 62321-7-2 (2017) and performed by UV-VIS.	8	n.d.	1000
<b>Sum of PBBs</b>	mg/kg		-	n.d.	1000
Monobromobiphenyl	mg/kg		5	n.d.	-
Dibromobiphenyl	mg/kg		5	n.d.	-
Tribromobiphenyl	mg/kg		5	n.d.	-
Tetrabromobiphenyl	mg/kg		5	n.d.	-
Pentabromobiphenyl	mg/kg		5	n.d.	-
Hexabromobiphenyl	mg/kg		5	n.d.	-
Heptabromobiphenyl	mg/kg		5	n.d.	-
Octabromobiphenyl	mg/kg		5	n.d.	-
Nonabromobiphenyl	mg/kg		5	n.d.	-
Decabromobiphenyl	mg/kg	With reference to IEC 62321-6 (2015) and performed by GC/MS.	5	n.d.	-
<b>Sum of PBDEs</b>	mg/kg		-	n.d.	1000
Monobromodiphenyl ether	mg/kg		5	n.d.	-
Dibromodiphenyl ether	mg/kg		5	n.d.	-
Tribromodiphenyl ether	mg/kg		5	n.d.	-
Tetrabromodiphenyl ether	mg/kg		5	n.d.	-
Pentabromodiphenyl ether	mg/kg		5	n.d.	-
Hexabromodiphenyl ether	mg/kg		5	n.d.	-
Heptabromodiphenyl ether	mg/kg		5	n.d.	-
Octabromodiphenyl ether	mg/kg		5	n.d.	-
Nonabromodiphenyl ether	mg/kg		5	n.d.	-
Decabromodiphenyl ether	mg/kg		5	n.d.	-

# Test Report

No. : CE/2019/52321

Date : 2019/05/21

Page : 3 of 7

KOTEC CORPORATION

21-15, 3 CHO, CHAYAMADAI, MINAMI, SAKAI, OSAKA, 590-0115 JAPAN

Test Item(s)	Unit	Method	MDL	Result	Limit
				No.1	
DEHP (Di- (2-ethylhexyl) phthalate) (CAS No.: 117-81-7)	mg/kg	With reference to IEC 62321-8 (2017). Analysis was performed by GC/MS.	50	n.d.	1000
BBP (Butyl Benzyl phthalate) (CAS No.: 85-68-7)	mg/kg	With reference to IEC 62321-8 (2017). Analysis was performed by GC/MS.	50	n.d.	1000
DBP (Dibutyl phthalate) (CAS No.: 84-74-2)	mg/kg	With reference to IEC 62321-8 (2017). Analysis was performed by GC/MS.	50	n.d.	1000
DIBP (Di-isobutyl phthalate) (CAS No.: 84-69-5)	mg/kg	With reference to IEC 62321-8 (2017). Analysis was performed by GC/MS.	50	n.d.	1000

**Note :**

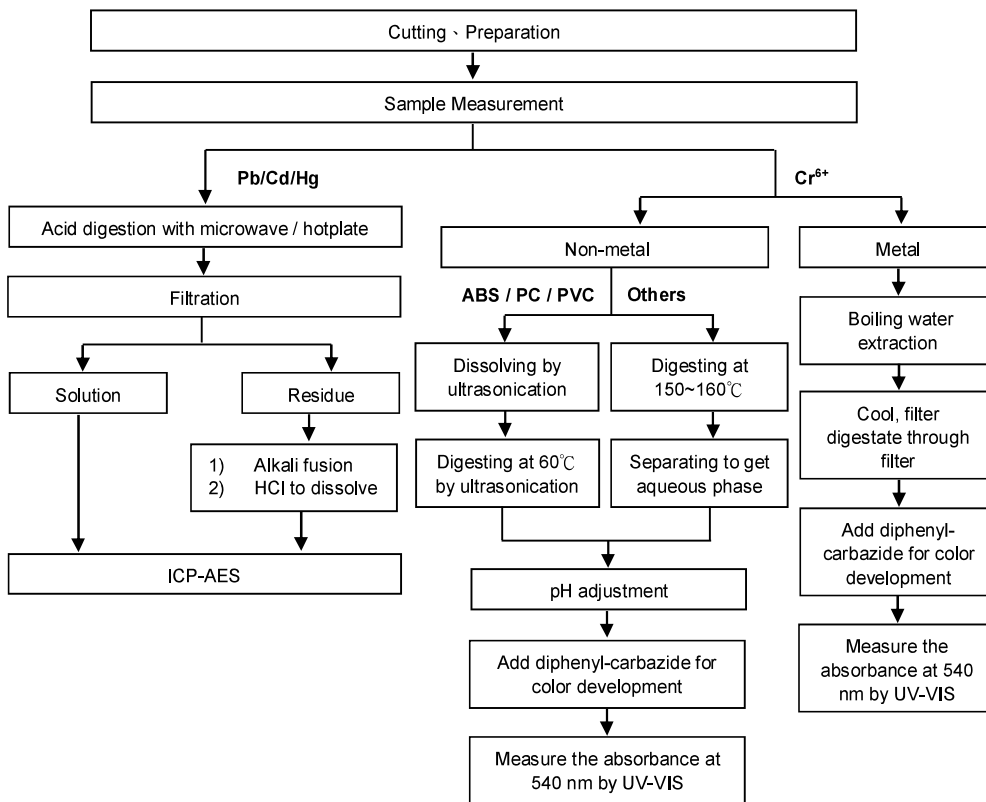
1. mg/kg = ppm ; 0.1wt% = 1000ppm
2. MDL = Method Detection Limit
3. n.d. = Not Detected = below MDL
4. " - " = Not Regulated

KOTEC CORPORATION  
 21-15, 3 CHO, CHAYAMADAI, MINAMI, SAKAI, OSAKA, 590-0115 JAPAN

### Analytical flow chart of Heavy Metal

These samples were dissolved totally by pre-conditioning method according to below flow chart. (Cr<sup>6+</sup> test method excluded)

- Technician : Rita Chen
- Supervisor: Troy Chang



## Test Report

No. : CE/2019/52321

Date : 2019/05/21

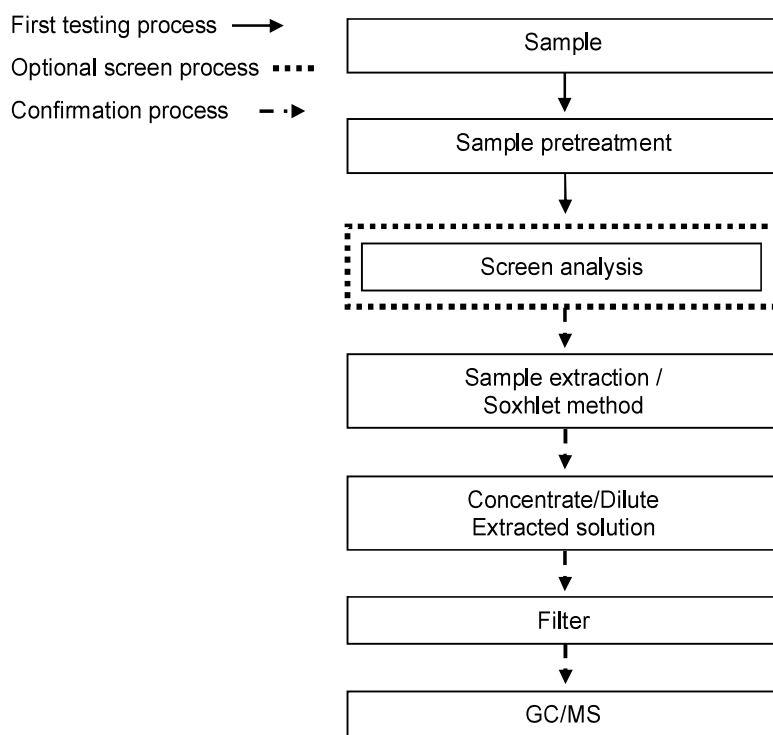
Page : 5 of 7

KOTEC CORPORATION

21-15, 3 CHO, CHAYAMADAI, MINAMI, SAKAI, OSAKA, 590-0115 JAPAN

### Analytical flow chart – PBB / PBDE

- Technician : Yaling Tu
- Supervisor: Troy Chang



# Test Report

No. : CE/2019/52321

Date : 2019/05/21

Page : 6 of 7

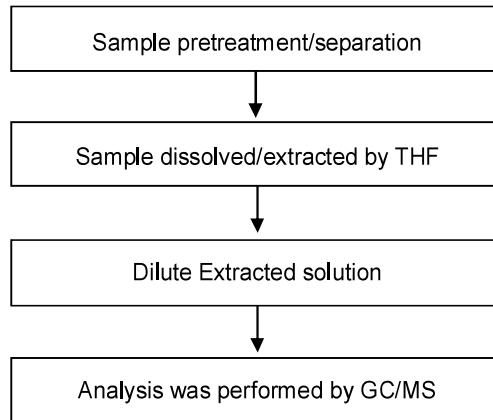
KOTEC CORPORATION

21-15, 3 CHO, CHAYAMADAI, MINAMI, SAKAI, OSAKA, 590-0115 JAPAN

## Analytical flow chart - Phthalate

- Technician: Yaling Tu
- Supervisor: Troy Chang

**【Test method: IEC 62321-8】**



## Test Report

No. : CE/2019/52321

Date : 2019/05/21

Page : 7 of 7

KOTEC CORPORATION

21-15, 3 CHO, CHAYAMADAI, MINAMI, SAKAI, OSAKA, 590-0115 JAPAN

\* The tested sample / part is marked by an arrow if it's shown on the photo. \*

### CE/2019/52321



\*\* End of Report \*\*