

# Test Report

No. : KA/2019/10371

Date : 2019/01/11

Page : 1 of 7

GRAND PACIFIC PETROCHEMICAL CORPORATION  
10 FL., NO. 1, SEC. 4, NANJING E. ROAD, TAIPEI, TAIWAN R.O.C

The following sample(s) was/were submitted and identified by/on behalf of the applicant as :

Sample Submitted By : GRAND PACIFIC PETROCHEMICAL CORP.  
Sample Description : ABS  
Style/Item No. : D-650  
Sample Receiving Date : 2019/01/07  
Testing Period : 2019/01/07 to 2019/01/11

Test Requested : As specified by client, with reference to RoHS 2011/65/EU Annex II and amending Directive (EU) 2015/863 to determine Cadmium, Lead, Mercury, Cr(VI), PBBs, PBDEs, DBP, BBP, DEHP, DIBP contents in the submitted sample.

Test Result(s) : Please refer to next page(s).

Conclusion : Based on the performed tests on submitted samples, the test results of Cadmium, Lead, Mercury, Cr(VI), PBBs, PBDEs, DBP, BBP, DEHP, DIBP comply with the limits as set by RoHS and amending Directive (EU) 2015/863.

Ray Chang Ph.D. / Manager  
Signed for and on behalf of  
SGS Taiwan Limited  
Chemical Laboratory-Kaohsiung

Unless otherwise stated the results shown in this test report refer only to the sample(s) tested. This test report cannot be reproduced, except in full, without prior written permission of the Company. 除非另有說明，此報告結果僅對測試之樣品負責。本報告未經本公司書面許可，不可部分複製。  
This document is issued by the Company subject to its General Conditions of Service printed overleaf, available on request or accessible at [www.sgs.com/terms\\_and\\_conditions.htm](http://www.sgs.com/terms_and_conditions.htm) and, for electronic format documents, subject to Terms and Conditions for Electronic Documents at [www.sgs.com/terms\\_e-document.htm](http://www.sgs.com/terms_e-document.htm). Attention is drawn to the limitation of liability, indemnification and jurisdiction issues defined therein. Any holder of this document is advised that information contained hereon reflects the Company's findings at the time of its intervention only and within the limits of Client's instructions, if any. The Company's sole responsibility is to its Client and this document does not exonerate parties to a transaction from exercising all their rights and obligations under the transaction documents. This document cannot be reproduced except in full, without prior written approval of the Company. Any unauthorized alteration, forgery or falsification of the content or appearance of this document is unlawful and offenders may be prosecuted to the fullest extent of the law.

# Test Report

No. : KA/2019/10371

Date : 2019/01/11

Page : 2 of 7

GRAND PACIFIC PETROCHEMICAL CORPORATION  
10 FL., NO. 1, SEC. 4, NANJING E. ROAD, TAIPEI, TAIWAN R.O.C

## Test Result(s)

PART NAME No.1 : WHITE PELLETS

| Test Item(s)               | Unit  | Method  | MDL   | Result  | Limit |      |      |
|----------------------------|-------|---|-------|---|-------|------|------|
|                            |       |   |       | No.1  |       |      |      |
| Cadmium (Cd)               | mg/kg | With reference to IEC 62321-5: 2013 and performed by ICP-AES. | 2     | n.d.  | 100   |      |      |
| Lead (Pb)                  | mg/kg | With reference to IEC 62321-5: 2013 and performed by ICP-AES. | 2     | n.d.  | 1000  |      |      |
| Mercury (Hg)               | mg/kg | With reference to IEC 62321-4: 2013 and performed by ICP-AES. | 2     | n.d.  | 1000  |      |      |
| Hexavalent Chromium Cr(VI) | mg/kg | With reference to IEC 62321-7-2:2017 and performed by UV-VIS. | 8     | n.d.  | 1000  |      |      |
| <b>Sum of PBBs</b>         | mg/kg | With reference to IEC 62321-6: 2015 and performed by GC/MS.   | -     | n.d.  | 1000  |      |      |
| Monobromobiphenyl          |       |   | 5     | n.d.  | -     |      |      |
| Dibromobiphenyl            |       |   | 5     | n.d.  | -     |      |      |
| Tribromobiphenyl           |       |   | 5     | n.d.  | -     |      |      |
| Tetrabromobiphenyl         |       |   | 5     | n.d.  | -     |      |      |
| Pentabromobiphenyl         |       |   | 5     | n.d.  | -     |      |      |
| Hexabromobiphenyl          |       |   | 5     | n.d.  | -     |      |      |
| Heptabromobiphenyl         |       |   | 5     | n.d.  | -     |      |      |
| Octabromobiphenyl          |       |   | 5     | n.d.  | -     |      |      |
| Nonabromobiphenyl          |       |   | 5     | n.d.  | -     |      |      |
| Decabromobiphenyl          |       |   | 5     | n.d.  | -     |      |      |
| <b>Sum of PBDEs</b>        |       |   | mg/kg | With reference to IEC 62321-6: 2015 and performed by GC/MS. | -     | n.d. | 1000 |
| Monobromodiphenyl ether    |       |   |       |   | 5     | n.d. | -    |
| Dibromodiphenyl ether      | 5     | n.d.  |       |   | -     |      |      |
| Tribromodiphenyl ether     | 5     | n.d.  |       |   | -     |      |      |
| Tetrabromodiphenyl ether   | 5     | n.d.  |       |   | -     |      |      |
| Pentabromodiphenyl ether   | 5     | n.d.  |       |   | -     |      |      |
| Hexabromodiphenyl ether    | 5     | n.d.  |       |   | -     |      |      |
| Heptabromodiphenyl ether   | 5     | n.d.  |       |   | -     |      |      |
| Octabromodiphenyl ether    | 5     | n.d.  |       |   | -     |      |      |
| Nonabromodiphenyl ether    | 5     | n.d.  |       |   | -     |      |      |
| Decabromodiphenyl ether    | 5     | n.d.  | -     |   |       |      |      |

Unless otherwise stated the results shown in this test report refer only to the sample(s) tested. This test report cannot be reproduced, except in full, without prior written permission of the Company. 除非另有說明，此報告結果僅對測試之樣品負責。本報告未經本公司書面許可，不可部分複製。  
This document is issued by the Company subject to its General Conditions of Service printed overleaf, available on request or accessible at [www.sgs.com/terms\\_and\\_conditions.htm](http://www.sgs.com/terms_and_conditions.htm) and, for electronic format documents, subject to Terms and Conditions for Electronic Documents at [www.sgs.com/terms\\_e-document.htm](http://www.sgs.com/terms_e-document.htm). Attention is drawn to the limitation of liability, indemnification and jurisdiction issues defined therein. Any holder of this document is advised that information contained hereon reflects the Company's findings at the time of its intervention only and within the limits of Client's instructions, if any. The Company's sole responsibility is to its Client and this document does not exonerate parties to a transaction from exercising all their rights and obligations under the transaction documents. This document cannot be reproduced except in full, without prior written approval of the Company. Any unauthorized alteration, forgery or falsification of the content or appearance of this document is unlawful and offenders may be prosecuted to the fullest extent of the law.

# Test Report

No. : KA/2019/10371

Date : 2019/01/11

Page : 3 of 7

GRAND PACIFIC PETROCHEMICAL CORPORATION  
10 FL., NO. 1, SEC. 4, NANJING E. ROAD, TAIPEI, TAIWAN R.O.C

| Test Item(s)   | Unit  | Method  | MDL | Result | Limit |
|--|-------|---|-----|--------|-------|
|  |       |   |     | No.1   |       |
| DIBP (Di-isobutyl phthalate)<br>(CAS No.: 84-69-5)         | mg/kg | With reference to IEC 62321-8:2017.<br>Analysis was performed by GC/MS. | 50  | n.d.   | 1000  |
| DBP (Dibutyl phthalate)<br>(CAS No.: 84-74-2)              | mg/kg | With reference to IEC 62321-8:2017.<br>Analysis was performed by GC/MS. | 50  | n.d.   | 1000  |
| BBP (Butyl Benzyl phthalate)<br>(CAS No.: 85-68-7)         | mg/kg | With reference to IEC 62321-8:2017.<br>Analysis was performed by GC/MS. | 50  | n.d.   | 1000  |
| DEHP (Di- (2-ethylhexyl) phthalate)<br>(CAS No.: 117-81-7) | mg/kg | With reference to IEC 62321-8:2017.<br>Analysis was performed by GC/MS. | 50  | n.d.   | 1000  |

## Note :

1. mg/kg = ppm ; 0.1wt% = 1000ppm
2. n.d. = Not Detected
3. MDL = Method Detection Limit
4. " - " = Not Regulated

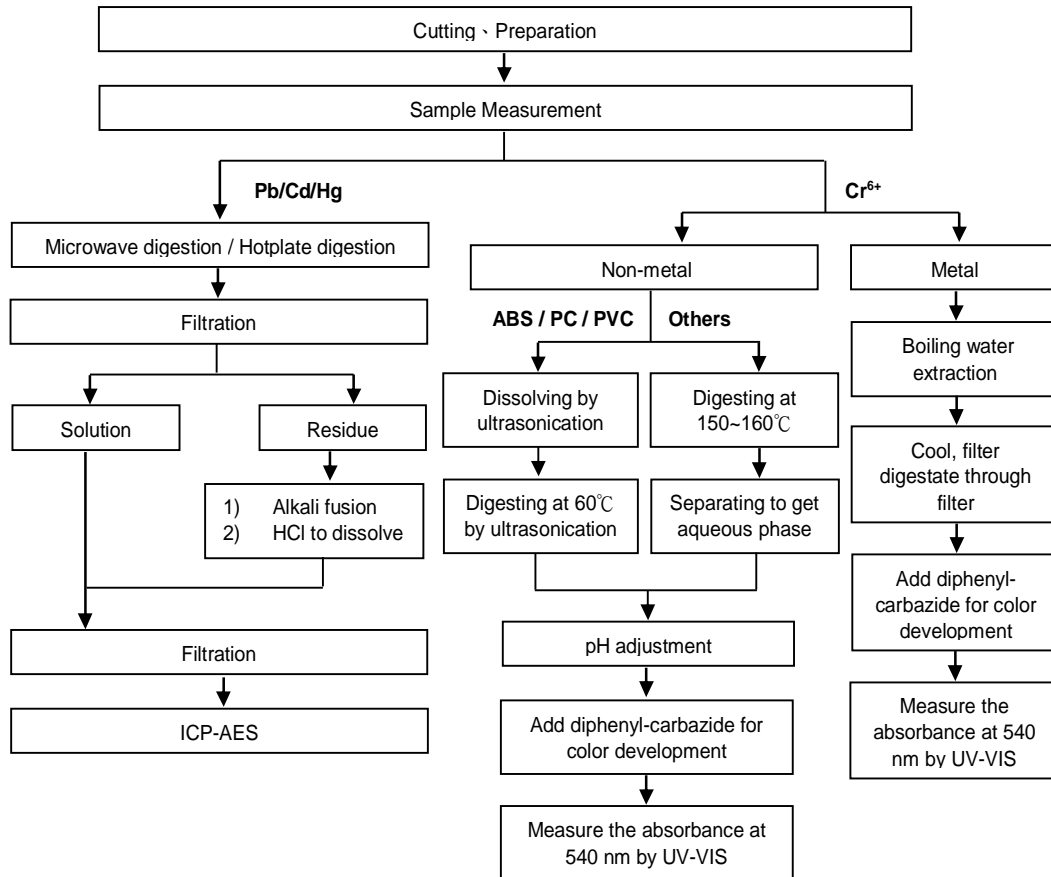
Unless otherwise stated the results shown in this test report refer only to the sample(s) tested. This test report cannot be reproduced, except in full, without prior written permission of the Company. 除非另有說明，此報告結果僅對測試之樣品負責。本報告未經本公司書面許可，不可部分複製。  
This document is issued by the Company subject to its General Conditions of Service printed overleaf, available on request or accessible at [www.sgs.com/terms\\_and\\_conditions.htm](http://www.sgs.com/terms_and_conditions.htm) and, for electronic format documents, subject to Terms and Conditions for Electronic Documents at [www.sgs.com/terms\\_e-document.htm](http://www.sgs.com/terms_e-document.htm). Attention is drawn to the limitation of liability, indemnification and jurisdiction issues defined therein. Any holder of this document is advised that information contained hereon reflects the Company's findings at the time of its intervention only and within the limits of Client's instructions, if any. The Company's sole responsibility is to its Client and this document does not exonerate parties to a transaction from exercising all their rights and obligations under the transaction documents. This document cannot be reproduced except in full, without prior written approval of the Company. Any unauthorized alteration, forgery or falsification of the content or appearance of this document is unlawful and offenders may be prosecuted to the fullest extent of the law.

GRAND PACIFIC PETROCHEMICAL CORPORATION  
10 FL., NO. 1, SEC. 4, NANJING E. ROAD, TAIPEI, TAIWAN R.O.C

### Analytical flow chart of Heavy Metal

These samples were dissolved totally by pre-conditioning method according to below flow chart. (Cr<sup>6+</sup> test method excluded)

- Technician : Jony Liu
- Supervisor: Ray Chang

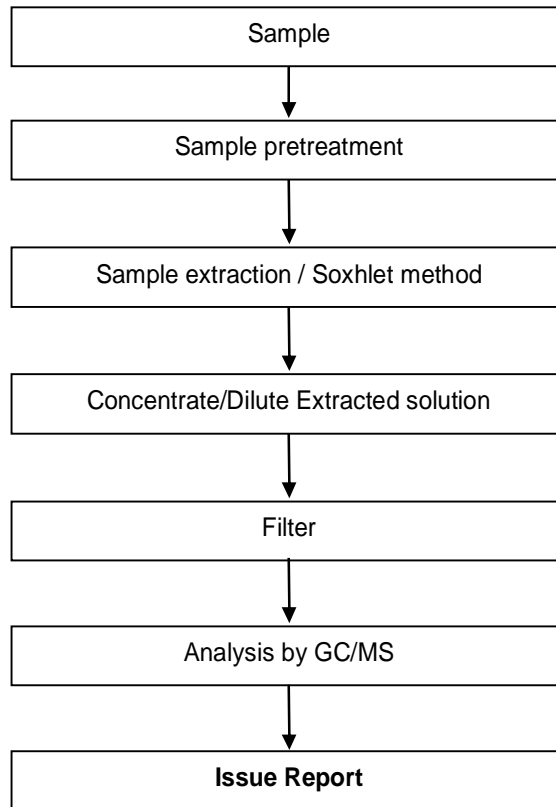


Unless otherwise stated the results shown in this test report refer only to the sample(s) tested. This test report cannot be reproduced, except in full, without prior written permission of the Company. 除非另有說明，此報告結果僅對測試之樣品負責。本報告未經本公司書面許可，不可部分複製。  
This document is issued by the Company subject to its General Conditions of Service printed overleaf, available on request or accessible at [www.sgs.com/terms\\_and\\_conditions.htm](http://www.sgs.com/terms_and_conditions.htm) and, for electronic format documents, subject to Terms and Conditions for Electronic Documents at [www.sgs.com/terms\\_e-document.htm](http://www.sgs.com/terms_e-document.htm). Attention is drawn to the limitation of liability, indemnification and jurisdiction issues defined therein. Any holder of this document is advised that information contained hereon reflects the Company's findings at the time of its intervention only and within the limits of Client's instructions, if any. The Company's sole responsibility is to its Client and this document does not exonerate parties to a transaction from exercising all their rights and obligations under the transaction documents. This document cannot be reproduced except in full, without prior written approval of the Company. Any unauthorized alteration, forgery or falsification of the content or appearance of this document is unlawful and offenders may be prosecuted to the fullest extent of the law.

GRAND PACIFIC PETROCHEMICAL CORPORATION  
 10 FL., NO. 1, SEC. 4, NANJING E. ROAD, TAIPEI, TAIWAN R.O.C

### PBB/PBDE analytical FLOW CHART

- Technician : Dorothy Chen
- Supervisor: Ray Chang



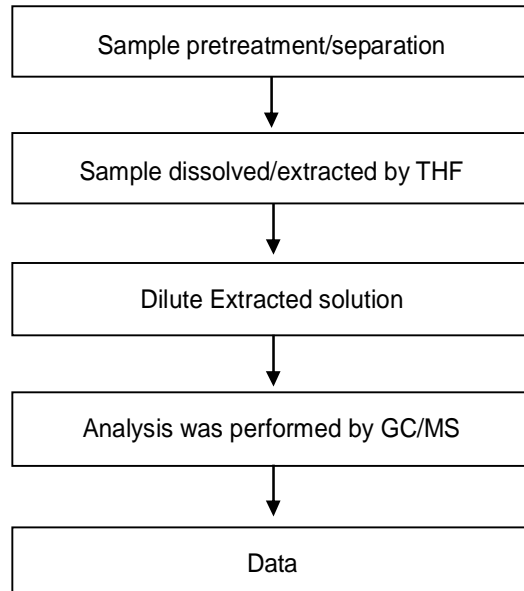
Unless otherwise stated the results shown in this test report refer only to the sample(s) tested. This test report cannot be reproduced, except in full, without prior written permission of the Company. 除非另有說明，此報告結果僅對測試之樣品負責。本報告未經本公司書面許可，不可部分複製。  
 This document is issued by the Company subject to its General Conditions of Service printed overleaf, available on request or accessible at [www.sgs.com/terms\\_and\\_conditions.htm](http://www.sgs.com/terms_and_conditions.htm) and, for electronic format documents, subject to Terms and Conditions for Electronic Documents at [www.sgs.com/terms\\_e-document.htm](http://www.sgs.com/terms_e-document.htm). Attention is drawn to the limitation of liability, indemnification and jurisdiction issues defined therein. Any holder of this document is advised that information contained hereon reflects the Company's findings at the time of its intervention only and within the limits of Client's instructions, if any. The Company's sole responsibility is to its Client and this document does not exonerate parties to a transaction from exercising all their rights and obligations under the transaction documents. This document cannot be reproduced except in full, without prior written approval of the Company. Any unauthorized alteration, forgery or falsification of the content or appearance of this document is unlawful and offenders may be prosecuted to the fullest extent of the law.

GRAND PACIFIC PETROCHEMICAL CORPORATION  
10 FL., NO. 1, SEC. 4, NANJING E. ROAD, TAIPEI, TAIWAN R.O.C

### Analytical flow chart of phthalate content

- Technician: Dorothy Chen
- Supervisor: Ray Chang

**【Test method: IEC 62321-8】**



Unless otherwise stated the results shown in this test report refer only to the sample(s) tested. This test report cannot be reproduced, except in full, without prior written permission of the Company. 除非另有說明，此報告結果僅對測試之樣品負責。本報告未經本公司書面許可，不可部分複製。  
This document is issued by the Company subject to its General Conditions of Service printed overleaf, available on request or accessible at [www.sgs.com/terms\\_and\\_conditions.htm](http://www.sgs.com/terms_and_conditions.htm) and, for electronic format documents, subject to Terms and Conditions for Electronic Documents at [www.sgs.com/terms\\_e-document.htm](http://www.sgs.com/terms_e-document.htm). Attention is drawn to the limitation of liability, indemnification and jurisdiction issues defined therein. Any holder of this document is advised that information contained hereon reflects the Company's findings at the time of its intervention only and within the limits of Client's instructions, if any. The Company's sole responsibility is to its Client and this document does not exonerate parties to a transaction from exercising all their rights and obligations under the transaction documents. This document cannot be reproduced except in full, without prior written approval of the Company. Any unauthorized alteration, forgery or falsification of the content or appearance of this document is unlawful and offenders may be prosecuted to the fullest extent of the law.

## Test Report

No. : KA/2019/10371

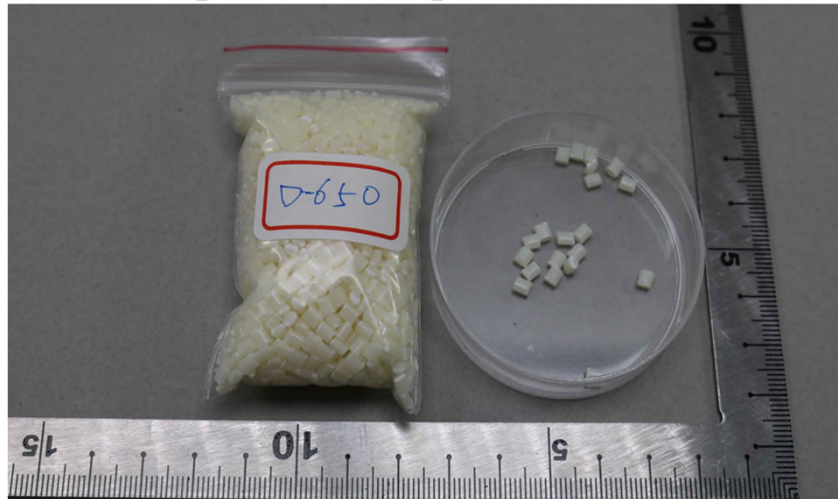
Date : 2019/01/11

Page : 7 of 7

GRAND PACIFIC PETROCHEMICAL CORPORATION  
10 FL., NO. 1, SEC. 4, NANJING E. ROAD, TAIPEI, TAIWAN R.O.C

\* The tested sample / part is marked by an arrow if it's shown on the photo. \*

# KA/2019/10371



\*\* End of Report \*\*

Unless otherwise stated the results shown in this test report refer only to the sample(s) tested. This test report cannot be reproduced, except in full, without prior written permission of the Company. 除非另有說明，此報告結果僅對測試之樣品負責。本報告未經本公司書面許可，不可部分複製。  
This document is issued by the Company subject to its General Conditions of Service printed overleaf, available on request or accessible at [www.sgs.com/terms\\_and\\_conditions.htm](http://www.sgs.com/terms_and_conditions.htm) and, for electronic format documents, subject to Terms and Conditions for Electronic Documents at [www.sgs.com/terms\\_e-document.htm](http://www.sgs.com/terms_e-document.htm). Attention is drawn to the limitation of liability, indemnification and jurisdiction issues defined therein. Any holder of this document is advised that information contained hereon reflects the Company's findings at the time of its intervention only and within the limits of Client's instructions, if any. The Company's sole responsibility is to its Client and this document does not exonerate parties to a transaction from exercising all their rights and obligations under the transaction documents. This document cannot be reproduced except in full, without prior written approval of the Company. Any unauthorized alteration, forgery or falsification of the content or appearance of this document is unlawful and offenders may be prosecuted to the fullest extent of the law.